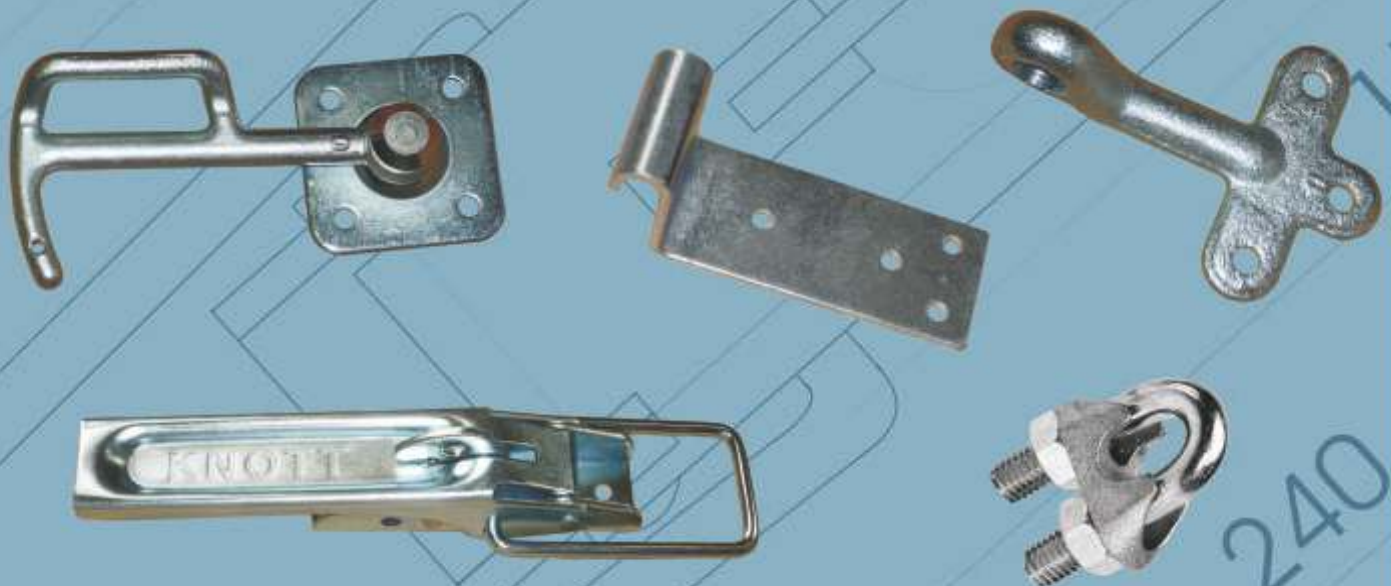
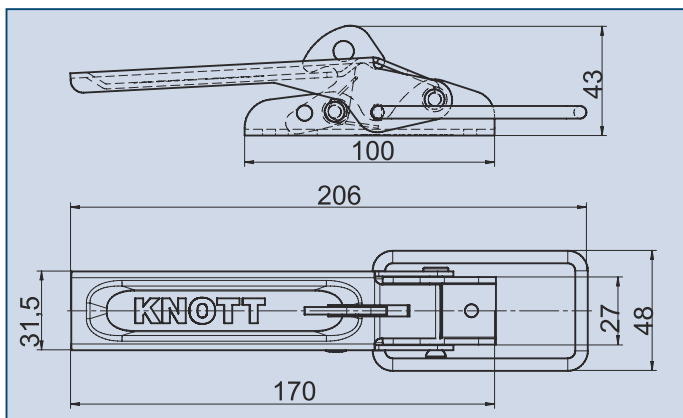


# VEHICLE FASTENERS, ACCESSORIES



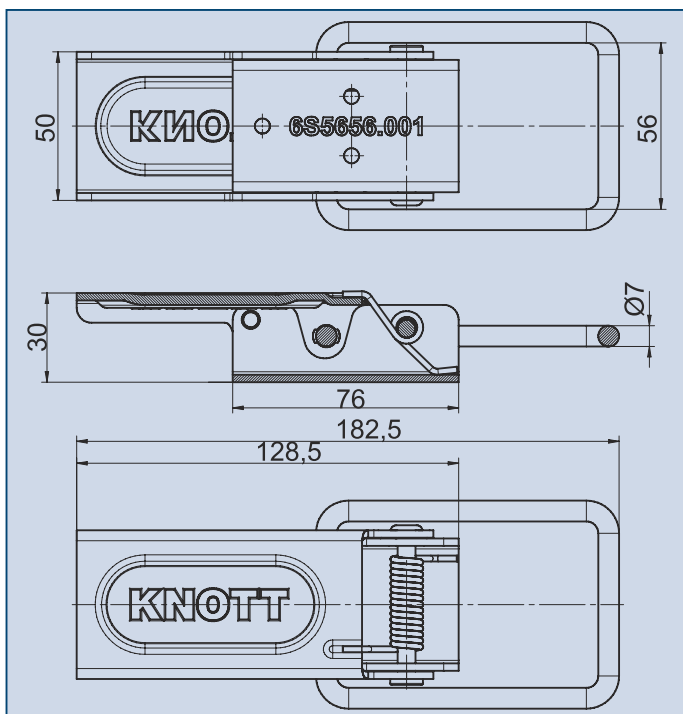
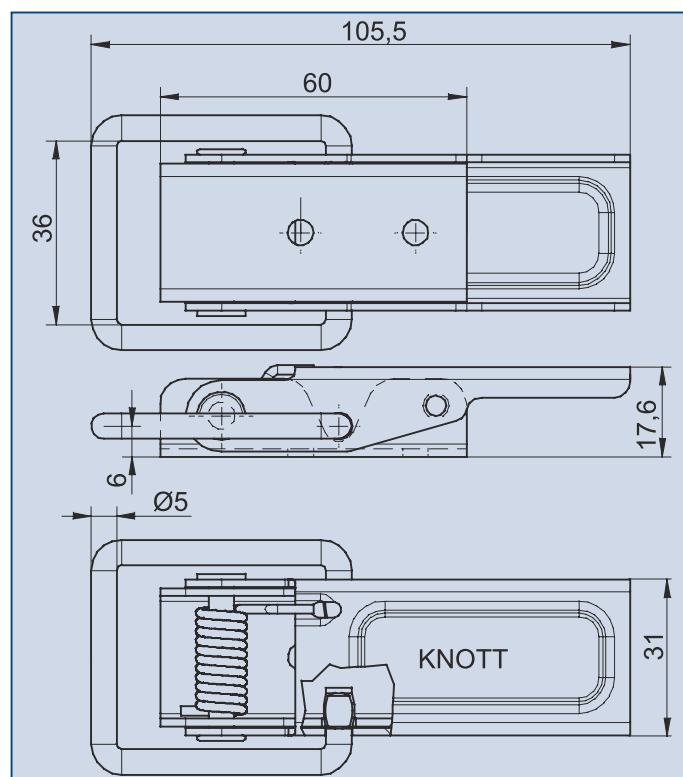
## OVERCENTRE LATCH



Overcentre latch II  
with round bracket, zinc plated  
Article number: 6X0016.007

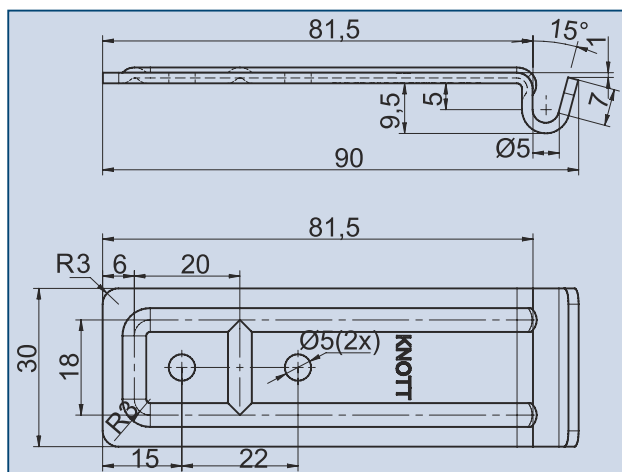


Overcentre latch RB31  
with spring and round bracket,  
zinc plated  
Article number: 6S5719.001

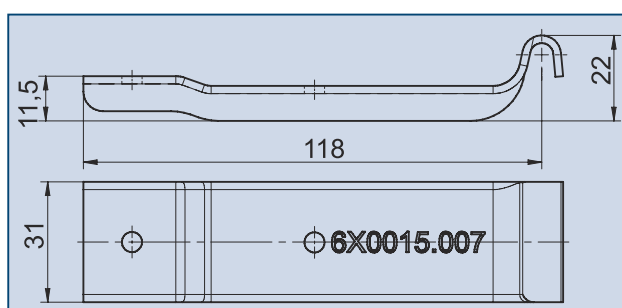


Overcentre latch RB50  
with spring and round bracket,  
zinc plated  
Article number: 6S5656.001

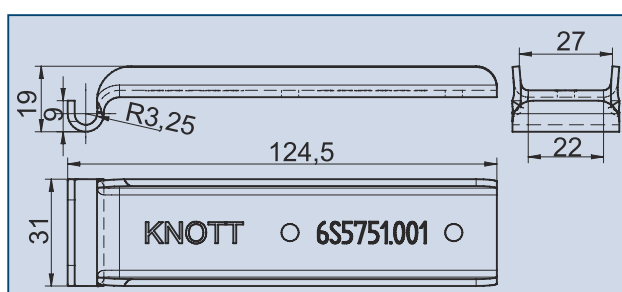
## CATCH PLATE



Catch plate IV  
zinc plated stamped steel  
Article number: 6S5756.001



Catch plate, cranked  
zinc plated  
Article number: 6X0015.007



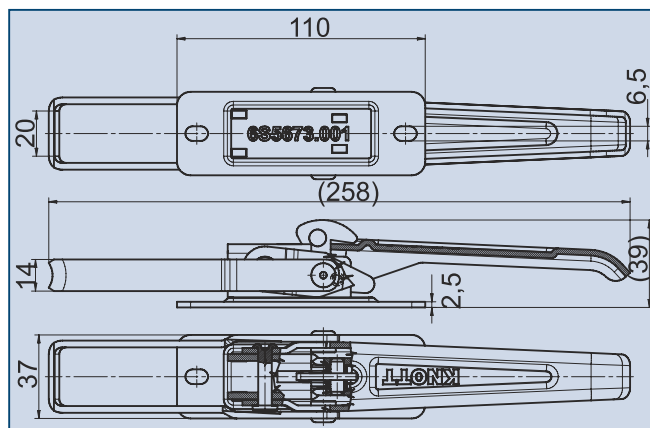
Catch plate, straight III  
zinc plated  
Article number: 6S5751.001



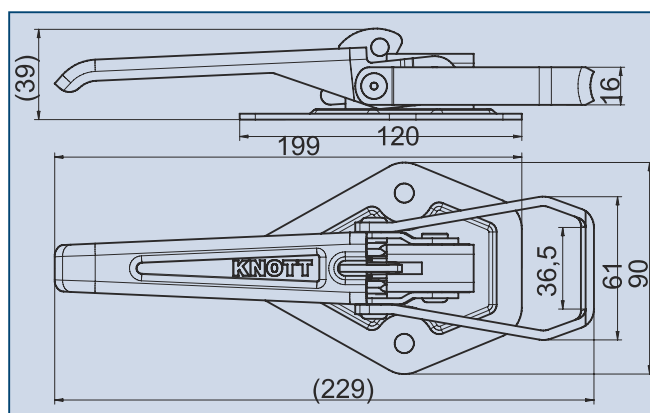
## LATCH



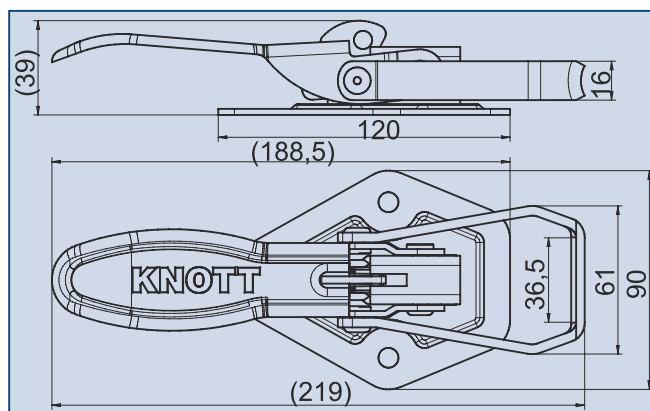
Overcentre latch I  
with flat bracket  
zinc plated  
Article number: 6S5673.001



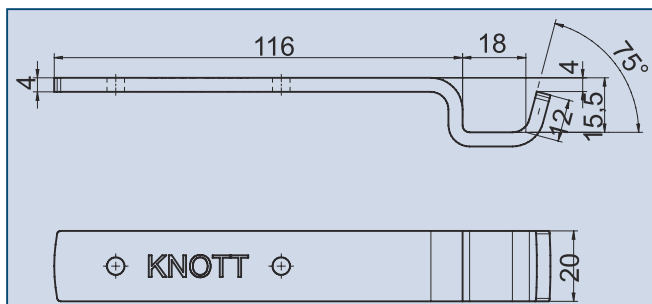
Overcentre latch III  
with flat bracket  
zinc plated  
Article number: 6S5672.001



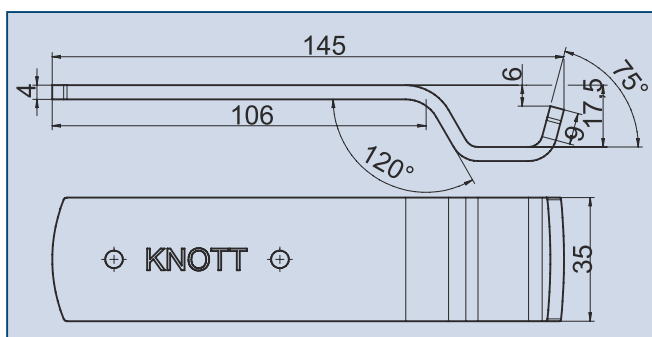
Overcentre latch IV  
with flat bracket  
zinc plated  
Article number: 6S5674.001



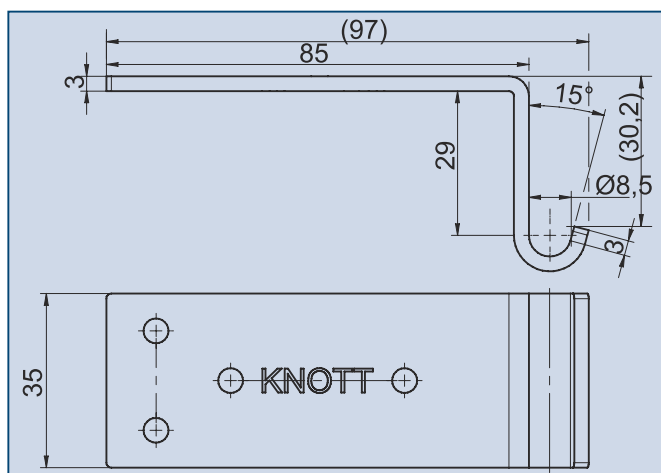
## CATCH PLATE



Catch plate B20  
zinc plated  
Article number: 6S5753.001

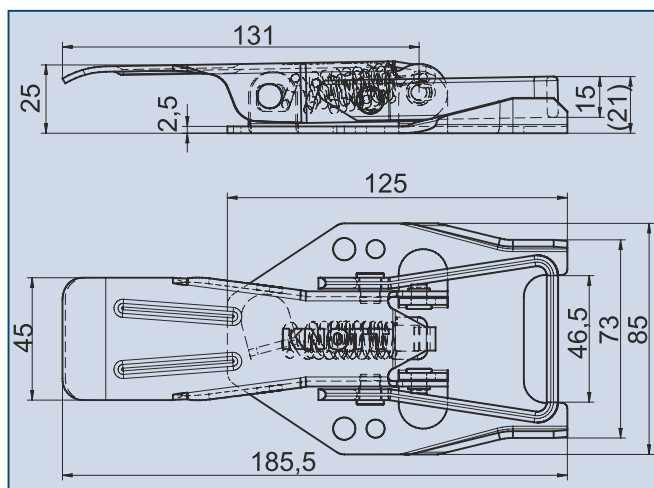


Catch plate B35  
zinc plated  
Article number: 6S5757.001



Catch plate II  
right angle, zinc plated  
Article number: 6S5754.001

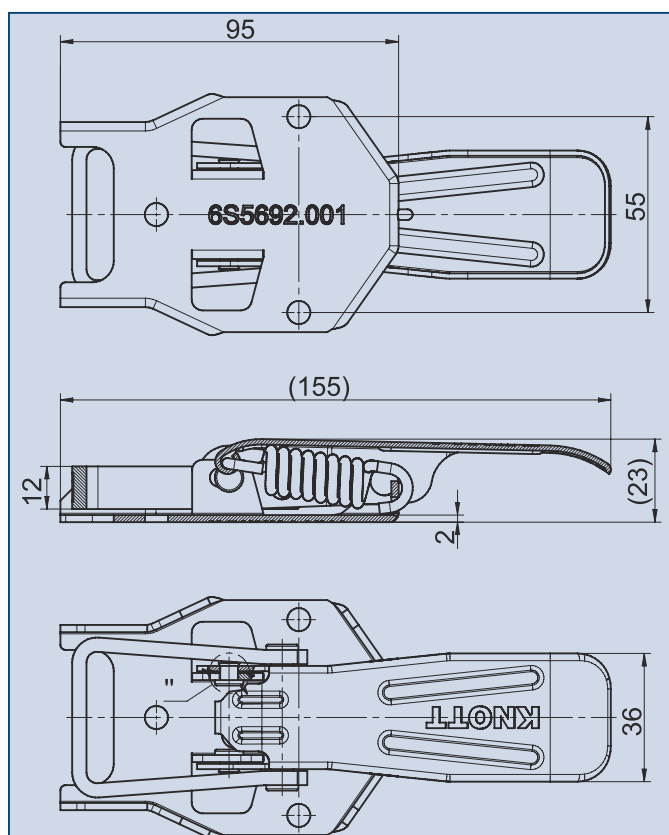
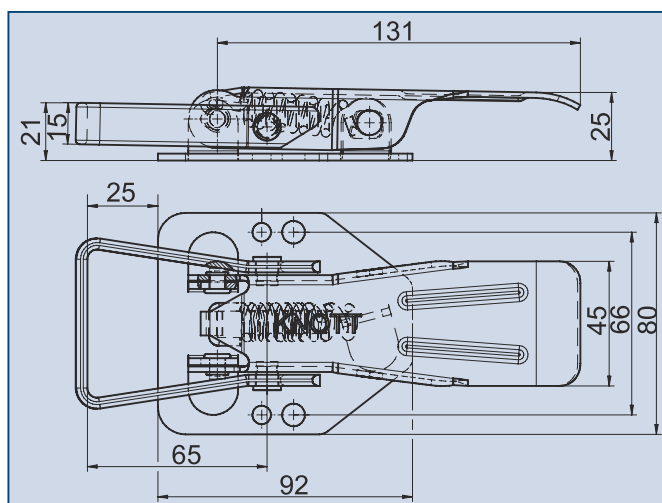
## LATCH



Overcentre latch with spring and flat bracket, zinc plated  
Article number: 6S5779.001

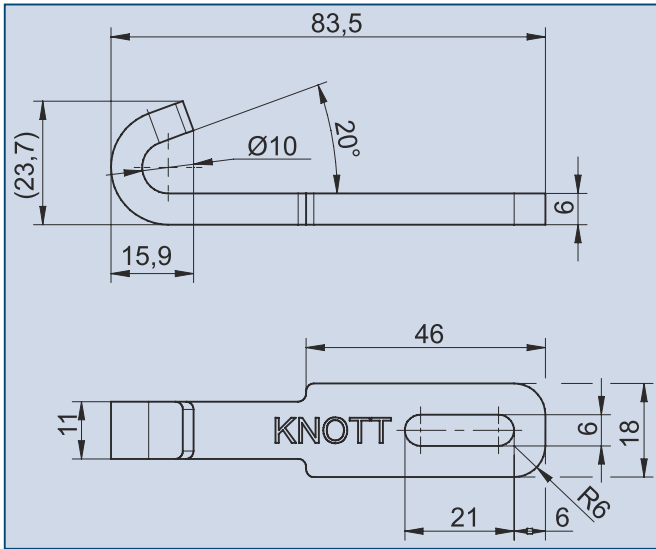


Overcentre latch with spring and flat bracket, zinc plated  
Article number: 6S5778.001



Overcentre latch with spring and flat bracket, zinc plated  
Article number: 6S5692.001

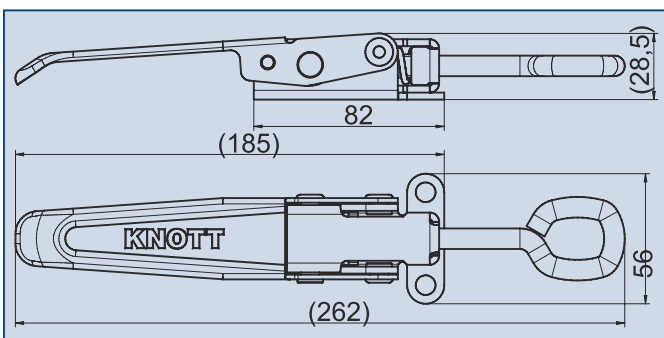
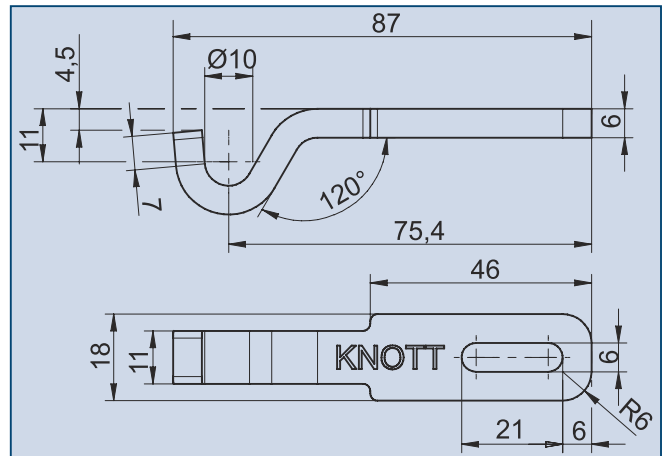
## CATCH PLATE



Engaging hook  
straight, zinc plated  
Article number: 6S5752.001



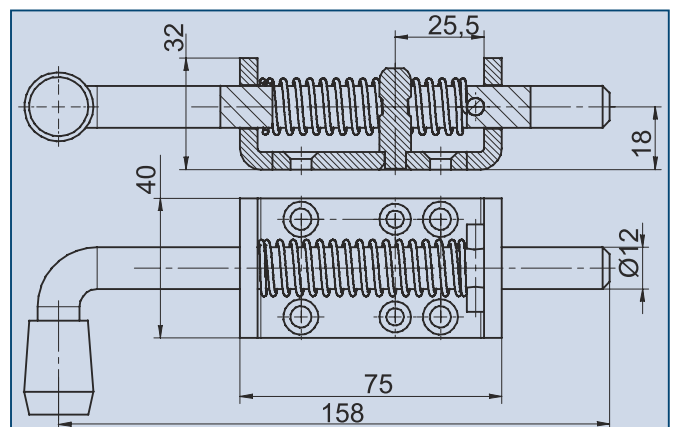
Engaging hook  
curved, zinc plated  
Article number: 6S5755.001



Adjustable overcentre latch  
with spring, zinc plated  
Article number: 6S5684.001



Spring latch  
with plastic handle  
zinc plated  
Article number: 6S5716.001





## LOCKING DEVICE



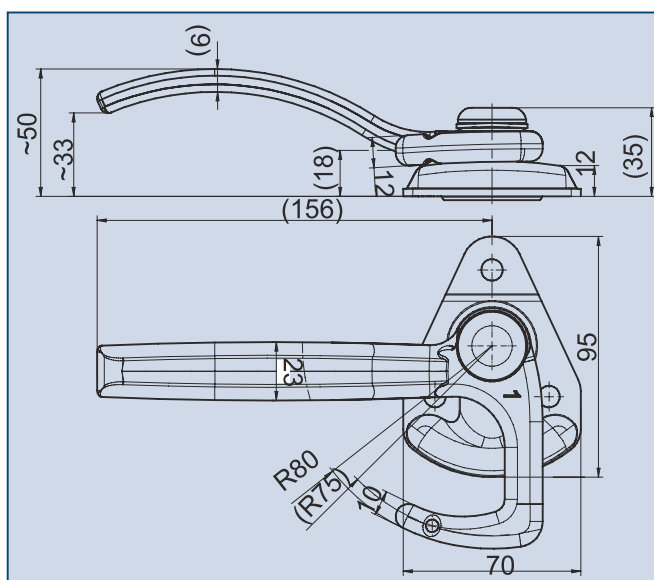
left



right

Angle lever lock  
zinc plated

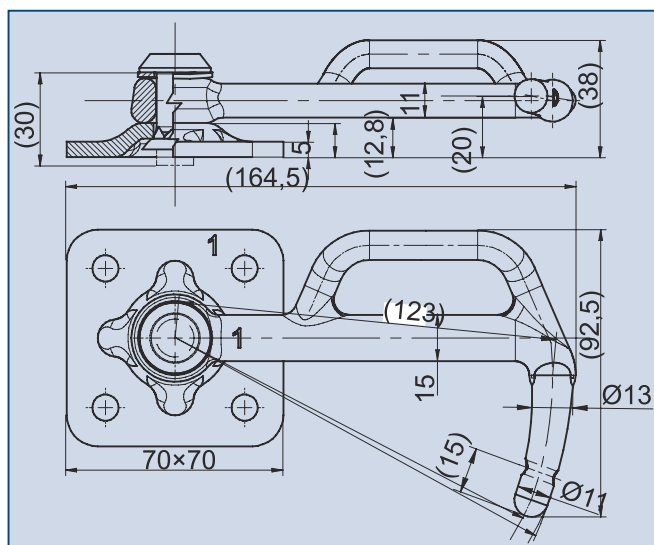
Article number: 6S5762.001 left  
6S5762.002 right



left



right



Bow lock, size "1"

base plate: 70×70 mm

zinc plated

Article number: 6S5766.001 left  
6S5766.002 right



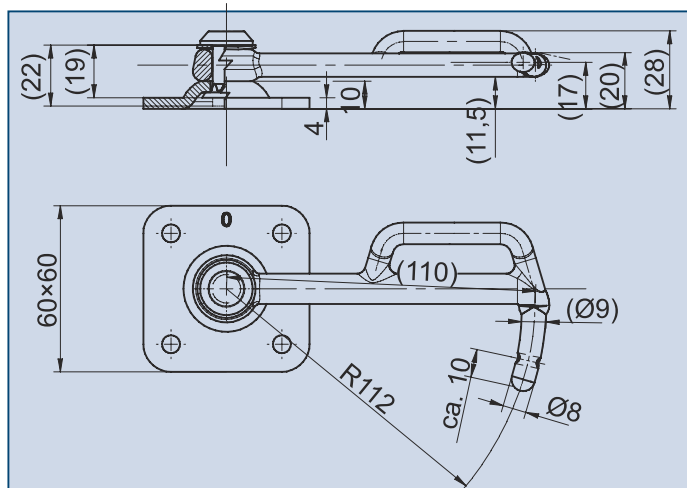
## BOW LOCK



left



right



Bow lock, size "0"

base platet: 60×60 mm

zinc plated

Article number: 6S5770.001 left

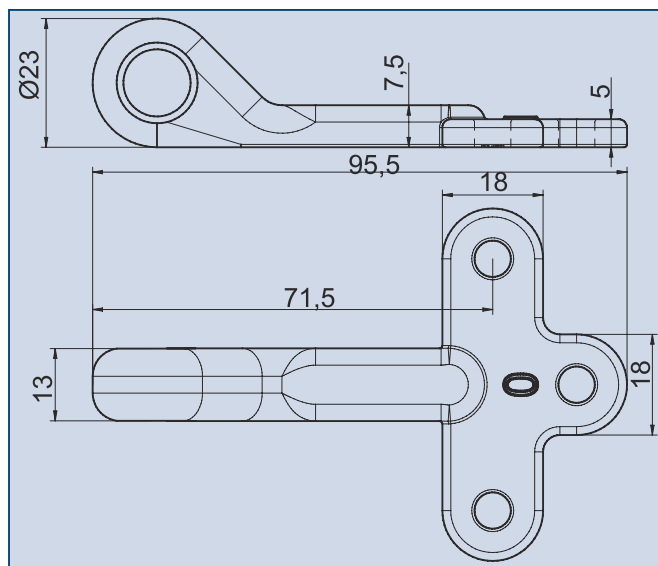
6S5770.002 right



Eyelet, size "0"

zinc plated

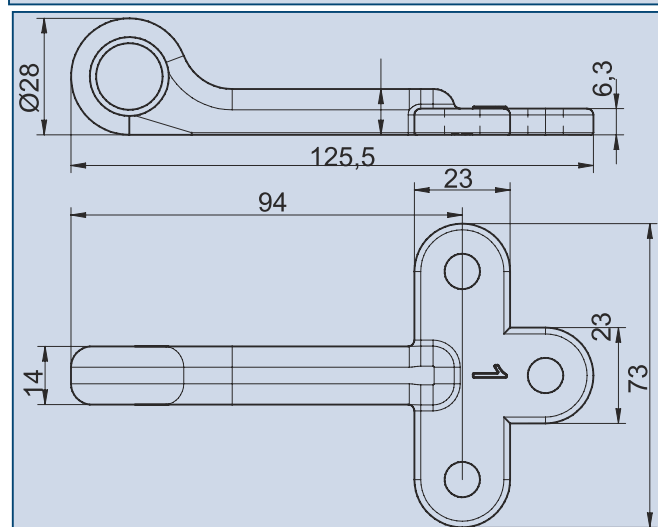
Article number: 6S5767.001



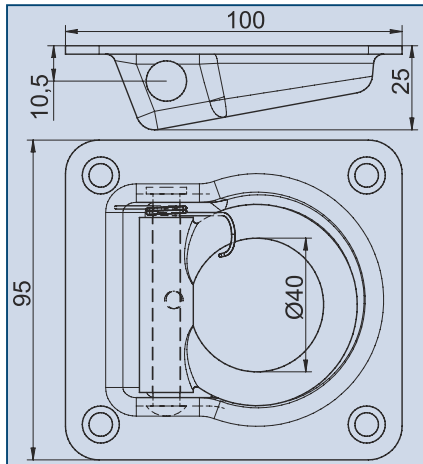
Eyelet, size "1"

zinc plated

Article number: 6S5758.001



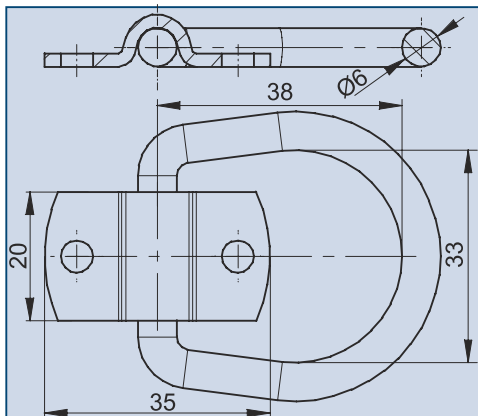
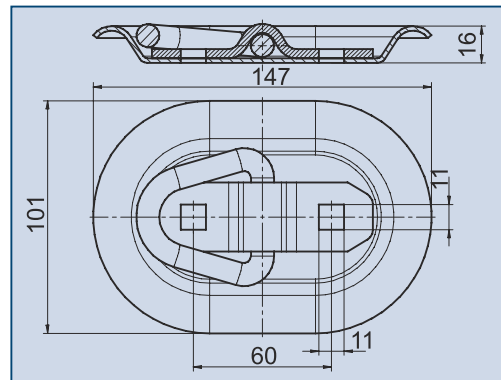
## LASHING RING



Recessed lashing ring, sprung eye,  
rectangular base zinc plated, for trailer  
Article number: 6S5727.001



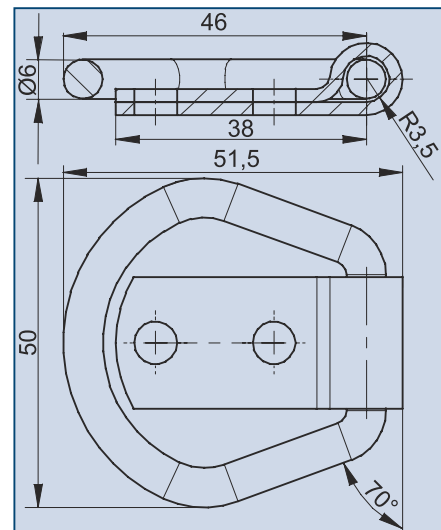
Recessed lashing ring,  
oval, zinc plated, for trailer  
Article number: 6S5726.001



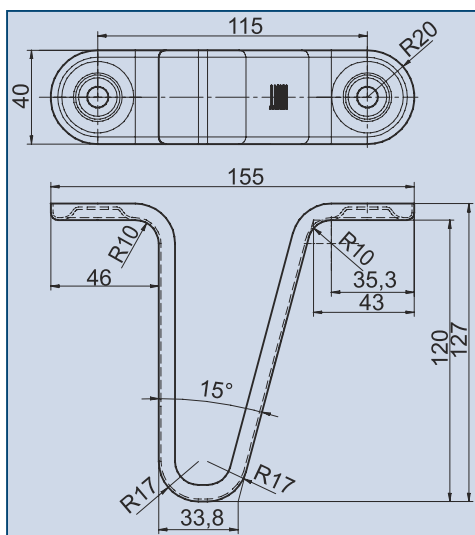
Lashing ring + cleat, D-ring  
zinc plated  
Article number: 6S5702.001



Lashing ring + cleat, triangular ring  
zinc plated  
Article number: 6S5707.001



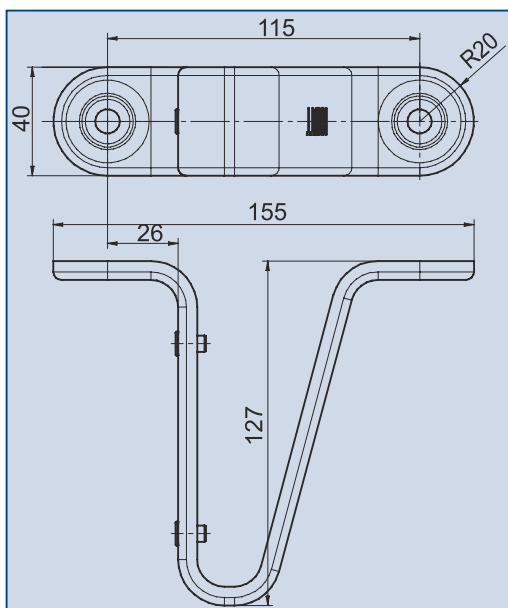
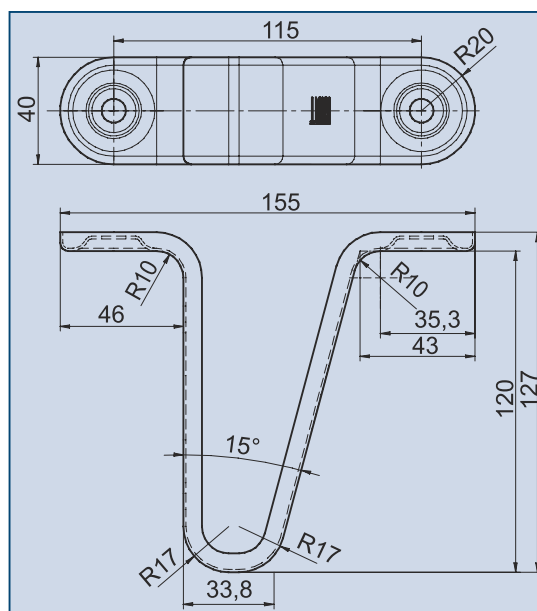
## LAMP BRACKET



Lamp holder  
zinc plated  
Article number: 6S5700.001

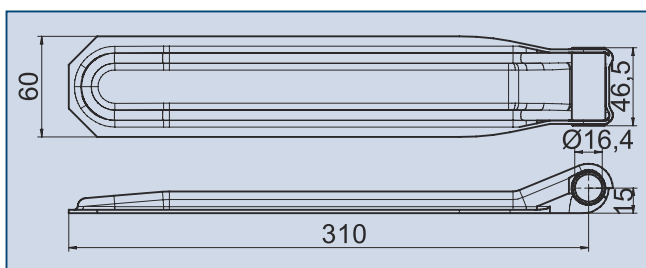


Lamp holder with bores  
zinc plated  
Article number: 6S5701.001



Lamp holder with bores  
and threaded pipes  
zinc plated  
Article number: 6S5735.001

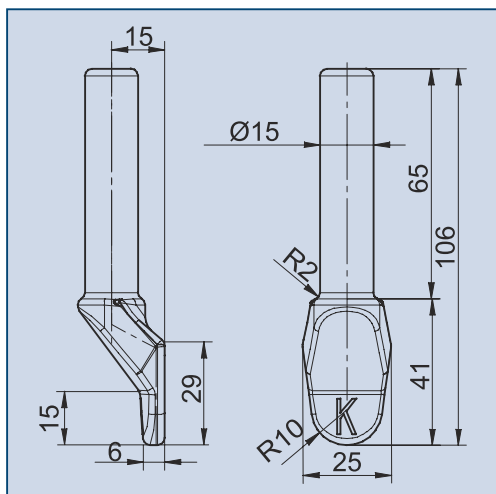
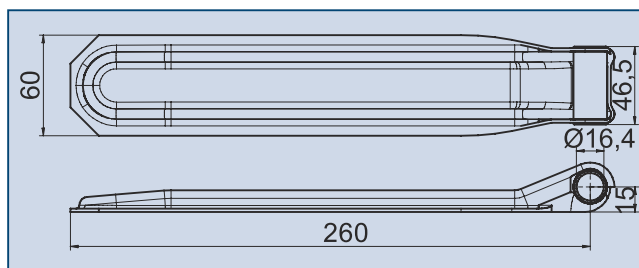
## HINGE



Hinge 310  
zinc plated, for Ø16 mm pin  
Article number: 6S5738.001



Hinge 260  
zinc plated, for Ø16 mm pin  
Article number: 6S5738.002



Hinge pin Ø16 mm  
natur forged steel, weld on  
Article number: 6S5739.001

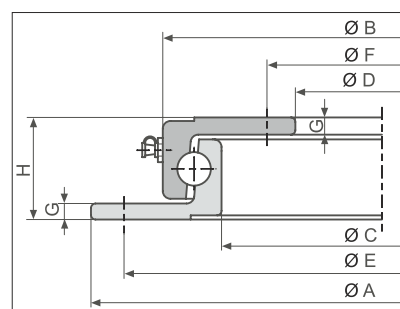
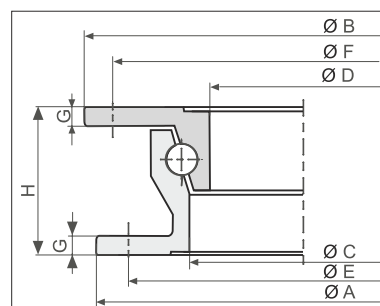
## WATER RESISTANT TIGHT BONDED PLATFORM

Article number	Thickness mm	Size of plate mm	Sign	Packaging pcs/pallet
6X0835.001	9	1250x2500	J/NY	65
6X0835.002	12	1250x2500	J/NY	50
6X0835.003	15	1250x2500	J/NY	40
6X0835.004	18	1250x2500	J/NY	35
6X0835.005	21	1250x2500	J/NY	30
6X0835.007	9	1500x2500	J/W	65
6X0835.008	12	1250x2500	J/W	50
6X0835.009	15	1250x2500	J/W	40
6X0835.010	18	1250x2500	J/W	30
6X0835.021	9	1500x3000	J/W	65
6X0835.022	12	1500x3000	J/W	50
6X0835.023	15	1500x3000	J/W	40
6X0835.024	18	1500x3000	J/W	30



9-21mm thickness, waterproof glued (AW 100), coated with phenol-pellicle on both side (120g/m<sup>2</sup>), non-skid surfacing in one-side (screen printed), both edge handled.  
One side patterned, one side smooth. Apparent density: 690kg/m<sup>3</sup>

## SLEWING RINGS



Nr.	Type	A (mm)	B (mm)	C (mm)	D (mm)	E (mm)	F (mm)	G (mm)	H (mm)	Load capacity max. (kg)	Articel number
1	400 Type1	400	400	310	292	375	375	6	55	750	6X1028.005
2	500 Type1	500	500	410	392	475	475	6	55	1000	6X1028.006
3	650 Type2	650	650	568	543	625	625	7	65	1700	6X1028.004
4	650 L	650	592	542	480	625	510	8	45	1500	6X1028.007
5	850 N	850	787	734	665	825	690	8	52	3500	6X1028.003

For agricultural trailers and internal transportation up to 25km/h

## RIMS AND WHEELS FOR TRAILERS



**100x4 pitch circle**



**112x5 pitch circle**

Type	Pitch circle	Load capacity (kg) at 140km/h	Article number
Wheel disc 4 Jx13H2 ET30	100x4	575	6X0630.003
Wheel disc 4,5 Jx13H2 ET30	100x4	575	6X0630.002
Wheel disc 4,5 Jx13H2 ET30	112x5	675	6X0630.005
Wheel disc 5 Jx13H2 ET30	112x5	700	6X0630.006
Wheel disc 5,5 Jx14H2 ET30	112x5	900	6X0630.001
Wheel disc 6 Jx14H2 ET30	112x5	900	6X0630.004
Wheel disc 6 Jx14H2 ET30	205x6	1250	6X0630.007

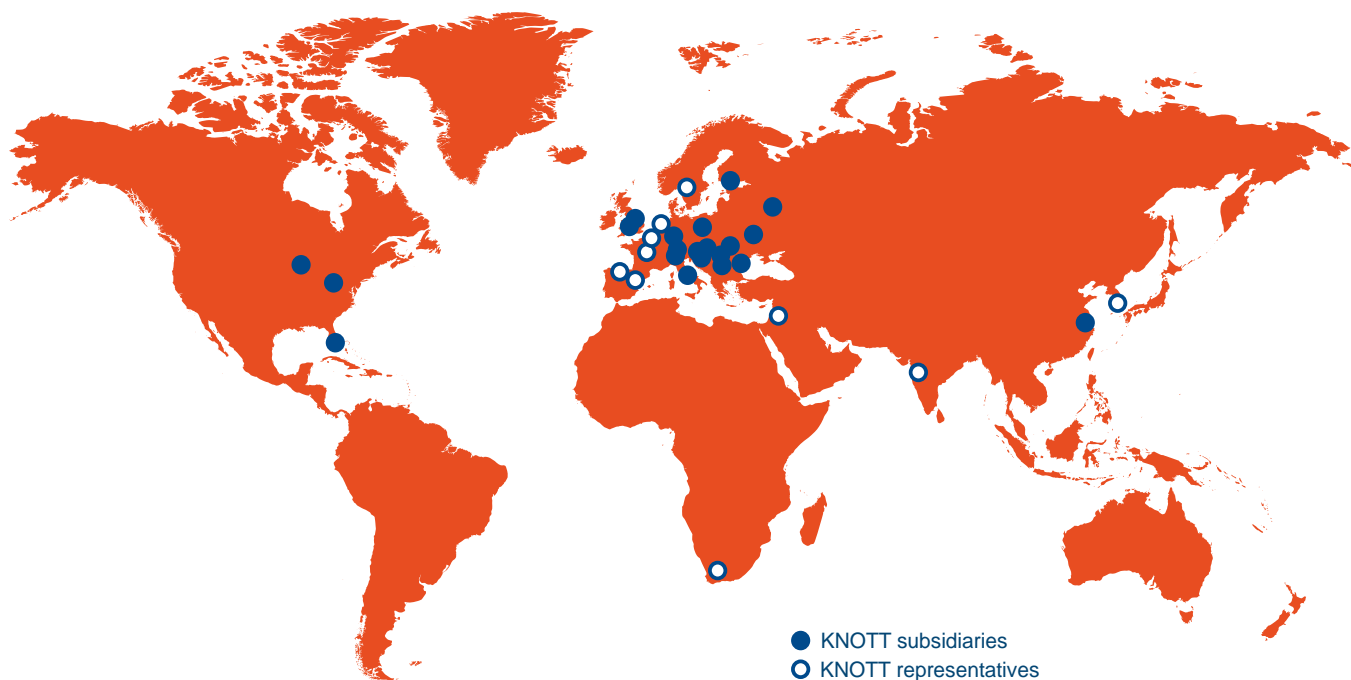


Type	Pitch circle	Load capacity kg	Towing speed max. [km/h]	Article number
4.00-8 ET 0	100x4	300	140	6X0698.035
5.00x10C	100x4	355	130	6X0698.023
155/70 R12	112x5	800	140	6X0698.014
155/70 R12C	112x5	900	140	6X0698.015
155/80 R13 ET30	100x4	437	190	6X0698.026
165 R13C	112x5	670	140	6X0698.009
165/70 R13 ET30	100x4	487	140	6X0698.006
165/80 R13	112x5	487	190	6X0698.008
185 R14 ET30	112x5	850	140	6X0698.004
195 R14 ET30	112x5	950	140	6X0698.005
195/50 B10 ET4	112x5	750	140	6X0698.007
215 R14C	205x6	1120	140	6X0698.012





# There is no trailer without us



## The Knott Group - global competency

The member companies of the Knott Group design, develop, produce and market braking systems for commercial and off-highway vehicles together with running gear components for trailers.

Competent, one-to-one consulting and outstanding product quality are characteristic of all the companies within the Group.

KNOTT's own production plants and branch offices are supported by a world-wide dealership network.



[www.autoflex.ro](http://www.autoflex.ro)

**KNOTT** GROUP  
BRAKE AND TRAILER TECHNOLOGY

Presented by:

## AUTOFLEX SRL

Tel.: (+40) 259/373-495 Fax: (+40) 259/406-748  
RO-415500 Salonta - Sos. Aradului km 75+300 - Romania  
web: [www.autoflex.ro](http://www.autoflex.ro) e-mail: [info@autoflex.ro](mailto:info@autoflex.ro)